

# Spiritwalker Tour

Monday, January 2<sup>nd</sup> 2012

Bob Sutherland

336-1717

[anchoragenordieskitours@gmail.com](mailto:anchoragenordieskitours@gmail.com)



Join us on a tour into terrain nestled within scenic peaks beside Manitoba Mountain like Spiritwalker, Hale-Bopp, Peak 4451 and Peak 5070 with broad views up Mills Creek and the Summit Lake valleys. For those with the appropriate ski and avalanche gear there will be some low-level backcountry turns.

Meet at the Chugach State Park Headquarters parking lot at 9 am. This is the parking lot about mile 115 on the Seward Highway. This is the parking lot with the train and the bathrooms just past the Potter Marsh. We'll carpool and drive to mile 48 of the Seward highway arriving about 10:30 am. Expect to arrive back to the cars about 3:30 pm depending on how much fun we are having.

The tour starts on the route to the Manitoba Mountain ski site. Initially the trail ambles to Mills Creek, steadily climbs for about 5-600 feet in about a mile where we'll leave the trail to Manitoba Mountain and head to Spiritwalker. (The picture above was taken from this location). Our ski trail drops about 250 feet to Juneau Creek in about  $\frac{3}{4}$  of a mile. There are several short steep sections in this section of the trail which will require skins for your skis to return. From Juneau Creek, the trail climbs for about a 1000 feet in a mile for the "downhill" portion of the ski trip (marked in purple on your map). The telemark or AT skiing is similar in steepness to what we'd find on Manitoba Mountain.

All tour participants should bring food, water and clothes to keep warm for their ski. They should also have a pair of skins for the return. Those who are going to participate on the downhill ski portion should have adequate ski gear plus beacon, shovel and probe. Dogs are welcome on this trip, be prepared with a leash for the segment we'll ski along the highway.

There are two nearby weather stations: Near Summit Lake perhaps 3 miles from our trailhead:  
[http://ambcs.org/cgi-bin/siteCurrent.cgi?site=SUMMIT\\_CRE\\_ABM](http://ambcs.org/cgi-bin/siteCurrent.cgi?site=SUMMIT_CRE_ABM)

About the same altitude that we'll climb to but across the Seward Highway from the ski trail:

[http://www.cnfaic.org/wx/wx\\_summit.php](http://www.cnfaic.org/wx/wx_summit.php)

and a DOT roadway camera with a view towards Manitoba Mountain:

<http://www.dot.state.ak.us/iways/roadweather/forms/SiteSum.html?areaId=2&perspectiveId=1&siteId=11>

check the Seward hwy NB shot for that shot.

And finally the zone forecast for the vicinity can be viewed by combining the two zones:

<http://pafc.arh.noaa.gov/pubfcst.php?fcst=FPAK51PAFC#AKZ121>

and

<http://pafc.arh.noaa.gov/pubfcst.php?fcst=FPAK51PAFC#AKZ125>

All NSAA tour participants should sign a release form once a year. They are available for download and signing at: <http://anchorgenordicski.com/Forms/NSAATourReleaseForm.pdf>

They will also be available at the start of the tour.

All the NSAA tours are accompanied by the Anchorage Nordic Ski Patrol. If needed, they provide first aid and safety for tour participants. We thank them for their valuable help.

You can help support the Tours section by purchasing an attractive knit ski cap. They'll be available at each tour.

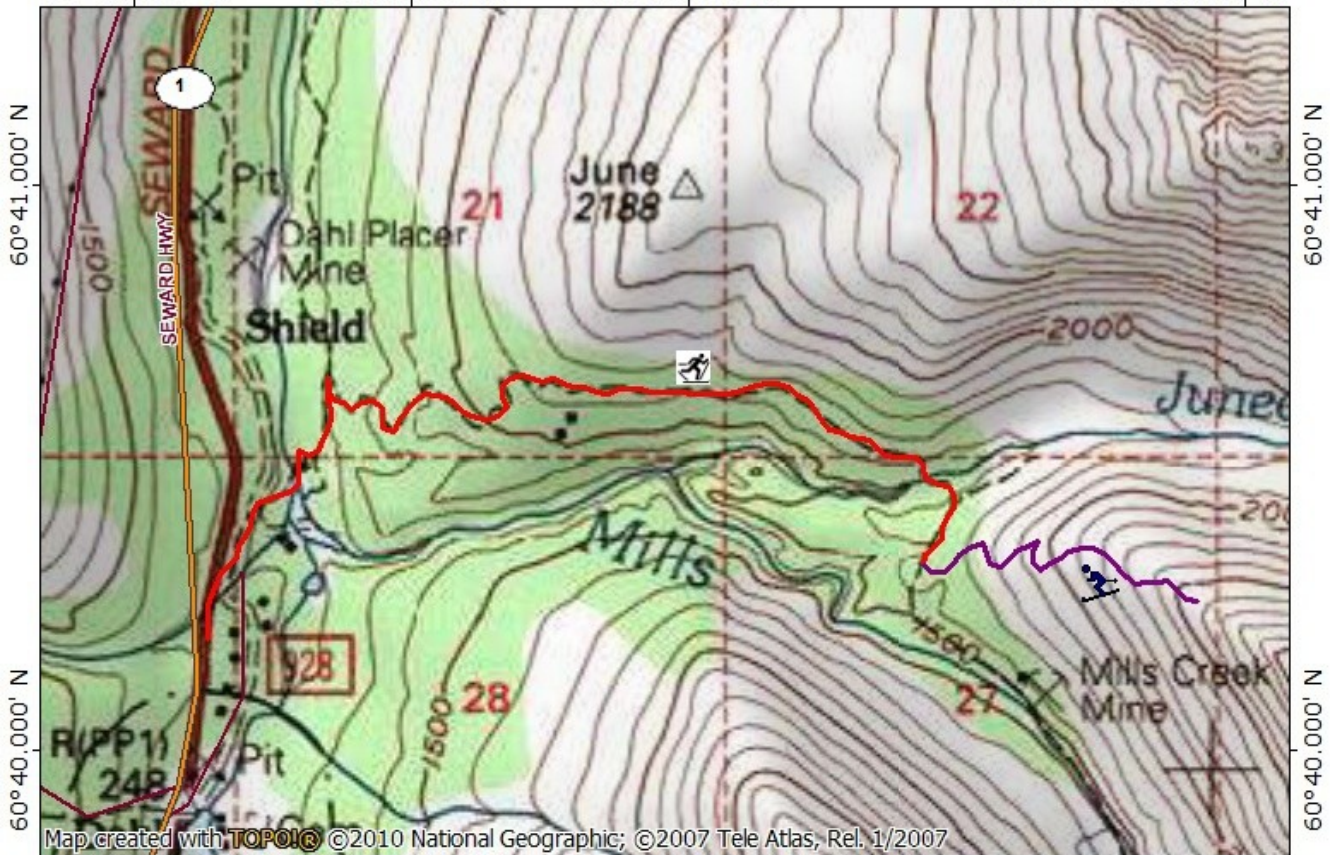
If you have more questions email us at [anchorgenordicskitours@gmail.com](mailto:anchorgenordicskitours@gmail.com) or call 336-1717.



**Nordic Ski Association of Anchorage**  
203 W. 15th Ave. #204  
Anchorage Alaska 99501  
907-276-7609

Spiritwalker Tour

149°29.000' W    149°28.000' W    149°27.000' W    WGS84 149°25.000' W



Map created with TOPO! © 2010 National Geographic; ©2007 Tele Atlas, Rel. 1/2007

149°29.000' W    149°28.000' W    149°27.000' W    WGS84 149°25.000' W

